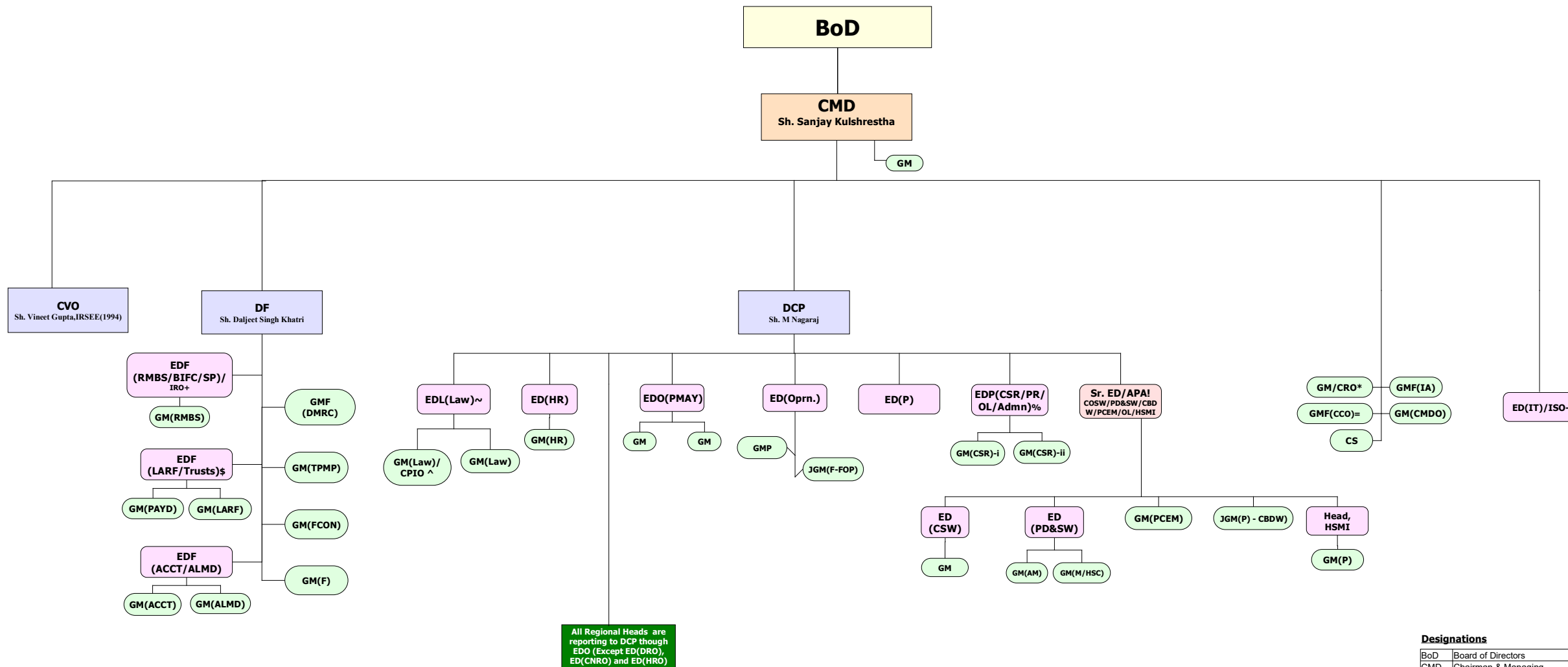


HOUSING AND URBAN DEVELOPMENT CORPORATION LIMITED

Organization Chart (Key Positions - December' 2024)



All Regional Heads are reporting to DCP though EDO (Except ED(DRO), ED(CNRO) and ED(HRO))

Functions

HSMI	Human Settlement Management Institute
Trg.	Training
CUP	Centre for Urban Poverty, Slum & Livelihood
CAH	Centre for Affordable Housing
CSH	Centre for Sustainable Habitat
CPD	Centre for Projects Development & Management

BIFC	Banking & Investment and Financial Coordination
PAYD	Payroll
TPMP	Third Party and Medical payments
FCON	Financial Concurrence
FOP	Finance Operation
ALMD	Asset & Liability Management Deptt
RMD	Risk Management Department

Oprn.	Operations
SH	Social Housing
P&T	Power & Transport
SP	Special Projects
VARE	Value Added Real Estate
CI	Core Infrastructure
PCEM	PSU (Parliamentary Statistical Unit), CP (Corp.Planning), EPAC (Economic Policy & Analysis) & MoU

CSW	Consultancy Services Wing
PD&SW	Property Development & Services Wing
CBDW	Coordination and Business Dev. Wing
M/HSC	Maintenance /HSC
CSR	Corp.Social Responsibility
IT	Information Technology
ISO	ISO
CS	Company Secretary
HR	Human Resource
Adm	Administration
IA	Internal Audit
PR	Public Relation
OL	Official Language
AA-RTI	Appellate Authority under RTI Act
CPIO-RTI	Central Public Information Officer under RTI Act

~ Looking after Transparency Cell, Public Grievance & Citizen Charter
 ! Nominated as Appellate Authority under RTI Act.
 * Assigned the role of Chief Risk Officer (CRO) & reporting to CMD.
 + Nominated as Investor Relation Officer (IRO) in compliance to SEBI .
 = Appointed as Chief Compliance Officer (CCO) in compliance to RBI Circular.
 ^ Nominated as CPIO and reports to CMD
 \$ Trust Chairman (CPF, Gratuity Trust, Superannuation Pension Trust).
 # As per approved organogram of HUDCO, HSMI & IT are directly reporting to CMD.
 - Also assigned the charge of ISO.
 % Reporting to Sr.ED for OL & Admn. related work.

Designations

BoD	Board of Directors
CMD	Chairman & Managing Director
DCP	Director Corporate Planning
DF	Director Finance
CVO	Chief Vigilance Officer
Sr.ED	Senior Executive Director
ED	Executive Director
GM	General Manager
CS	Company Secretary (GM level)
SF/F	Senior Fellow/ Fellow

Key Positions upto GM level only

Total no. of Employees	:580
CMD / Functional Directors(2)/CVO	: 4
No. of Executives	: 494
No. of Non-Exec:	: 82